

Approximately 1,400,000 cy of dredged material will be directed into open water areas east of the proposed barrier structure, facilitating marsh enhancement, via dredge pipe (see attached figure). A limited amount of earthen and sheet pile dikes will be constructed to an elevation of +4 feet to semi-contain the dredge material within the open water ponds to prevent seepage of material into existing pipeline canals or the GIWW. Dredge pipes will be directed into the southeastern ends of the open water areas and as the areas fill with dredged material the pipes will be backed out towards the entrance to minimize movement of the dredge pipe. A settlement analysis based on a previous study at Lake Borgne indicates the post-primary consolidation settlement height of dredge spoil will not exceed one-third of the height initially placed above the average water surface. Thus, if dredge spoil is placed to an elevation of +4 feet, it will be expected to settle to approximately +1 foot.

Temporary work area easements are required for mooring, marine access, and dredge disposal as listed in the segment map.

Because this is a semi-contained dike system, limited effluent may drift onto refuge property (tract 108E-3, specifically). However, COE has committed to the Department of Natural Resources, National Marine Fisheries Service, and U.S. Fish and Wildlife Service that the dredge placement operation will provide oversight such that material stacks no higher than 6-12 inches on existing marsh.

Construction equipment required to conduct the work will include generators, barges, boats, cranes, trucks, bulldozers, excavators, pile hammers, graders, tractors, cement mixers, and front-end loaders. The work will be largely water-based, the equipment and supplies will be stored at staging areas outside of the refuge and loaded onto work barges then moved throughout the site.

Currently Delta Terminal is the only business relocation therefore, the provisions of Title II of the Uniform Relocation Assistance and Real Property Acquisition Policies Act of 1970, Public Law 91-646, as amended, are applicable.

It requested that the Coastal Protection and Restoration Authority of Louisiana (CPRA) grant to the United States of America, rights of entry, including ingress and egress, to clear and unobstructed rights-of-way to perform the subject work. Enclosed is our "ROW Construction Timeline w/Phase Descriptions" chart. The orange shaded items denote that rights of entry or acquisition is required by October 25, 2008, the blue shaded areas are needed no later than by November 15, 2008, the green shaded areas are needed no later than by December 15, 2008 and the gray shaded area is required no later than December 31, 2008. All rights of entry should remain valid for a period of 3 years or until completion of construction.

If additional information is required, or if you need assistance, do not hesitate to call our Mr. Gregory Carter at (504) 862-1980.

Sincerely,

A handwritten signature in dark ink, appearing to read "Linda C. LaBure". The signature is fluid and cursive, written in a professional style.

Linda C. LaBure
Chief, Real Estate Division

Enclosures

Copy Furnished with enclosures:

Mr. David Miller
CPRA, Director of Implementation
8900 Jimmy Wedell
Baton Rouge, Louisiana 70807

Mr. Timothy Doody, President
Southeast Louisiana Flood Protection Authority – East
6512 Spanish Fort Blvd.
New Orleans, Louisiana 70124-4322

ROW Construction Timeline w/Phase Descriptions

TRACT	REQUEST	ROE NLT	OWNER	ESTATE TO BE ACQUIRED	ACRES
101E	ROE-Correl.	12-31	Newport Limited	Temporary Work Area Easement	6.09
103-1	ROE-Correl.	10-25	Tulane / Chalmette Meadows, et al	FEE Excluding Minerals	70.26
103-2	ROE-Correl.	10-25	Tulane / Chalmette Meadows, et al	FEE Excluding Minerals	5.67
103-3	ROE-Correl.	10-25	Tulane / Chalmette Meadows, et al	FEE Excluding Minerals	4.08
103E-1	ROE-Correl.	10-25	Tulane / Chalmette Meadows, et al	Perpetual Underground Piling Easement	1.40
103E-2 (FEE)	ROE-Correl.	10-25	Tulane / Chalmette Meadows, et al	FEE Excluding Minerals	10.37
103E-3	ROE-Correl.	10-25	Tulane / Chalmette Meadows, et al	Perpetual Underground Piling Easement	4.47
103E-4 (FEE)	ROE-Correl.	10-25	Tulane / Chalmette Meadows, et al	FEE Excluding Minerals	35.40
103E-5	ROE-Correl.	10-25	Tulane / Chalmette Meadows, et al	Temporary Work Area Easement (Disposal)	609.16
103E-6	ROE-Correl.	10-25	Tulane / Chalmette Meadows, et al	Temporary Work Area Easement (Mooring)	26.26
103E-7	ROE-Correl.	10-25	Tulane / Chalmette Meadows, et al	Temporary Work Area Easement (Mooring)	14.77
103E-8	ROE-Correl.	10-25	Tulane / Chalmette Meadows, et al	Temporary Work Area Easement (Mooring)	1.25
103E-9	ROE-Correl.	10-25	Tulane / Chalmette Meadows, et al	Temporary Work Area Easement (Mooring)	1.24
103E-10	ROE-Correl.	10-25	Tulane / Chalmette Meadows, et al	Temporary Work Area Easement (Mooring)	0.63
104E	ROE-Correl.	10-25	Orleans Parish School Board	Perpetual / Floodwall / Structure Easement	9.52
105	ROE-Correl.	12-15	Della Terminal	FEE Excluding Minerals	29.29
106	ROE-Correl.	12-15	Marmac Corporation	FEE Excluding Minerals	6.06
107	ROE-Correl.	12-15	East N.O. / Michoud Industrial Park	FEE Excluding Minerals	10.12
108E-1	ROE-Correl.	11-15	USA	Perpetual Flood Protection Leases / Floodwall / Structure Easement	49.5
108E-2	ROE-Correl.	11-15	USA	Temporary Work Area Easement (Disposal)	87.97
109E	ROE-Correl.	10-25	Marmac Corporation	Temporary Work Area Easement (Disposal)	35.06
113E-1	ROE-Correl.	10-25	Port of New Orleans	Temporary Work Area Easement	3.93
113E-2	ROE-Correl.	10-25	Port of New Orleans	Temporary Work Area Easement (Mooring)	11.75
115	ROE-Correl.	10-25	State of Louisiana	Grant of Practise Use	18.02
117E	ROE-Correl.	10-25	Port of New Orleans	Temporary Work Area Easement (Mooring)	9.90

HPO IHNC-02: IHNC HURRICANE PROTECTION ORLEANS AND ST. BERNARD PARISHES, LOUISIANA

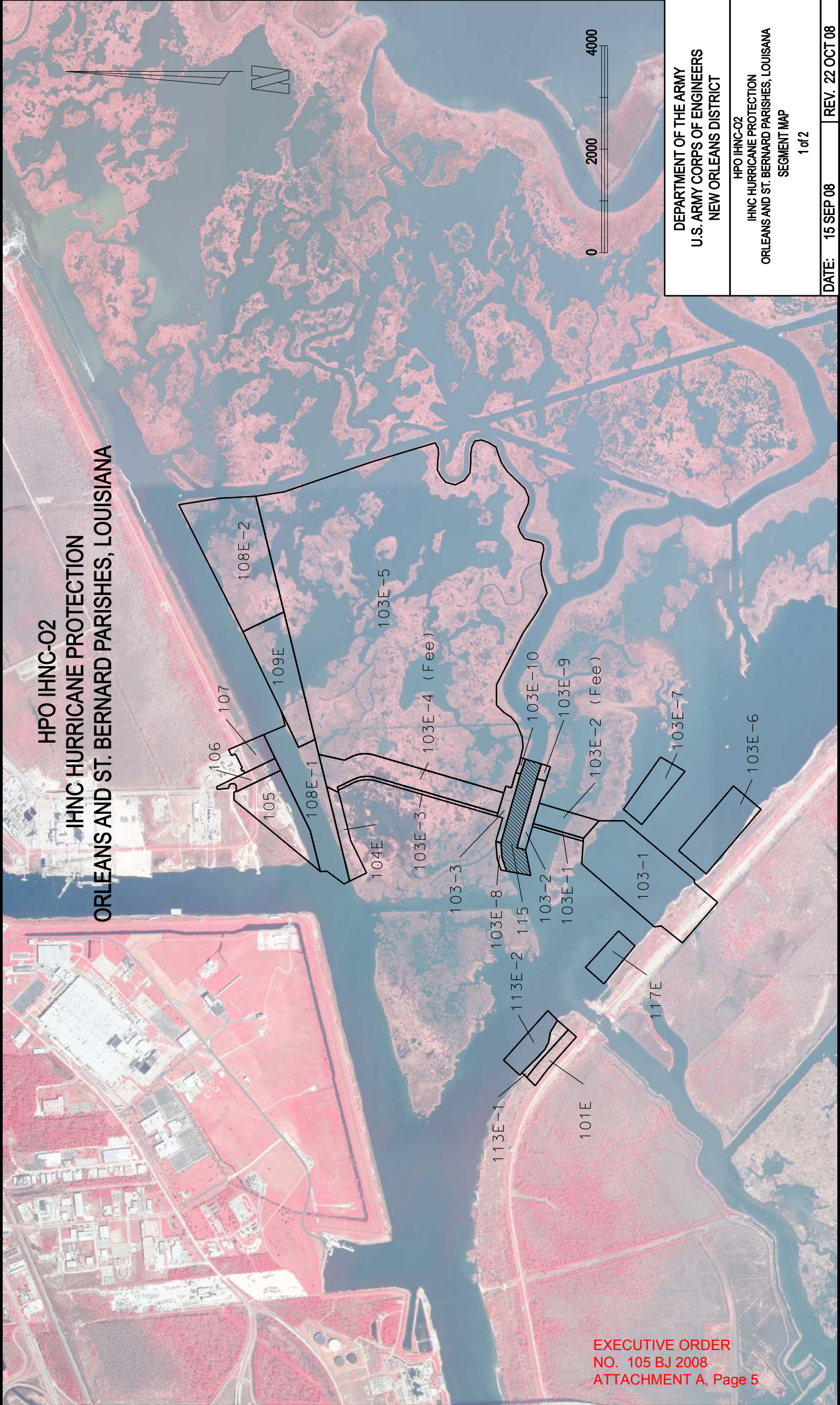
Color Code:	Description
Need to Attain by 10-25	Dredging surveys will start by this date along with mobilization of material in the waterways. Marsh buggys and supply barges will start construction on the containment dikes in tract 103E-5 by mid-Nov while the crews finish the surveying.
Need to Attain by 11-15	Dredge contractor will be fully mobilized by mid-NOV to start dredging the channel starting from GIWW and Bayou Bienvenue working south with two cutterhead dredges. Several crew boats and supply boats will be moving in and out of the area once we start dredging. Shoreline protection and pile driving will begin as early as 1 DEC with pile driving crews at Bayou Bienvenue, tract 115, and along the dredged channel. Additional supply boats carrying piles and cranes boats for pile driving will start arriving at this time. Fill operations will begin in the MRGO channel with supply barges and clam-shell cranes on barges. All mooring areas will be needed by mid-NOV for staging all of the equipment.
Need to Attain by 12-15	Work along the GIWW channel and the north & south transitions will begin in mid to late DEC. A combi-wall will be constructed in the GIWW using pile driving crews, cranes, and supply barges. Material barges will be staged along the north shoreline of the GIWW, Bayou Bienvenue, and the MRGO Channels. Dredges will still be running 24/7 disposing of material in the designated area.
Need to Attain by 12-31	We will need tract 101E NLT 12-31 for a laydown area to prepare steel & concrete cylinder/sheet pile for driving. A temporary bulkhead will be placed for a mooring and loading dock. The existing government road from Paris Road around to the Bienvenue structure will be improved to handle the increased traffic to this area. By JAN construction on all project features will be underway. Up to six pile driving crews will be working in the area 24/7 until the Advance Measures are complete in AUG 09. Expect over 50 vessels carrying cranes, supplies, piles, concrete, crews, light/generator boats, and other equipment in the area at one time.

**DEPARTMENT OF THE ARMY
U.S. ARMY CORPS OF
ENGINEERS
NEW ORLEANS DISTRICT**

HPO IHNC-02
IHNC HURRICANE PROTECTION
ORLEANS AND ST. BERNARD PARISHES, LOUISIANA
SEGMENT / MAP
2 OF 2

DATE: 22 OCT 08 | MAJ Chapman

**HPO IHNC-02
IHNC HURRICANE PROTECTION
ORLEANS AND ST. BERNARD PARISHES, LOUISIANA**



DEPARTMENT OF THE ARMY U.S. ARMY CORPS OF ENGINEERS NEW ORLEANS DISTRICT
HPO IHNC-02 IHNC HURRICANE PROTECTION ORLEANS AND ST. BERNARD PARISHES, LOUISIANA SEGMENT MAP 1 of 2
DATE: 15 SEP 08 REV. 22 OCT 08

EXECUTIVE ORDER
NO. 105 BJ 2008
ATTACHMENT A, Page 5

