
Explanation of Functional Areas

Business and Infrastructure includes: Economic Development; Culture, Recreation and Tourism; Labor; Insurance; Public Service Commission; Transportation and Development; Capital Outlay; Sales Tax Dedications; Parish Transportation; Sabine River Authority; Municipal Facility Revolving Fund; Louisiana Manufactured Housing Commission; Workforce Commission Office; Louisiana Stadium and Exposition District; Louisiana State Racing Commission; Office of Financial Institutions; Louisiana State Board of Cosmetology; Louisiana Health Insurance Association; and Louisiana Gulf Opportunity Zone Loan Fund.

Education includes: Department of Education; Higher Education; Special Schools and Commissions; and Higher Education Debt Service.

Environment and Natural Resources includes: Environmental Quality; Natural Resources; Wildlife and Fisheries; and Agriculture.

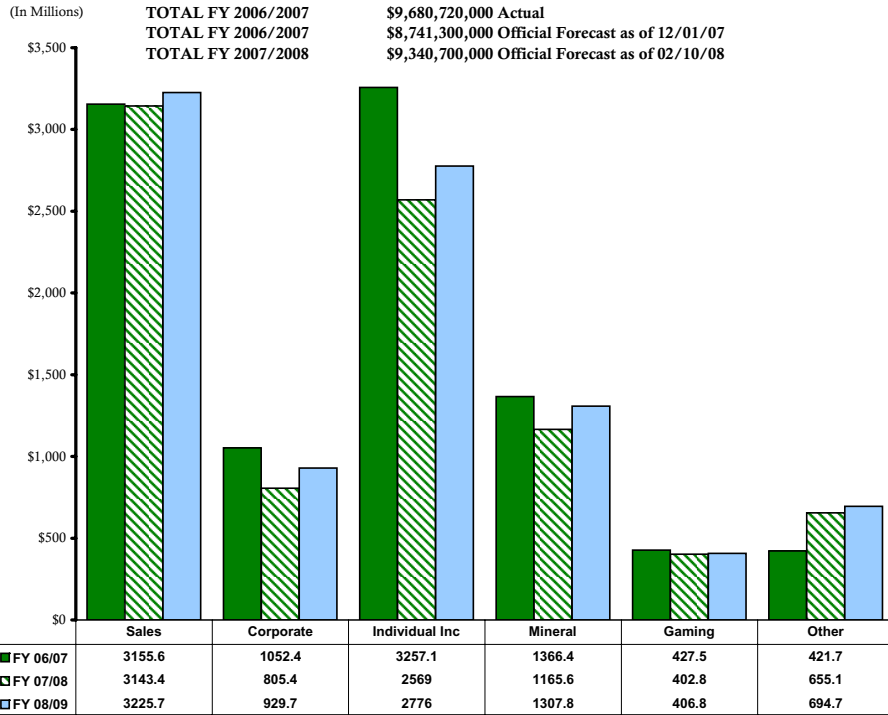
General Government includes: Executive Office; Office of Indian Affairs; Division of Administration (and related Ancillary agencies and DOA Debt Service and Maintenance); Louisiana Recovery Authority; Board of Tax Appeals; Secretary of State; Lieutenant Governor; Treasury; Revenue; Civil Service (except agencies listed in Public Safety); Retirement Systems; Interim Emergency Board; Video Draw Poker - Local Government Aid; Governor's Conferences and interstate Compacts; State Aid to Local Government Entities; Non-Appropriated Requirements; Judicial Expense; Legislative Expense; and Special Acts.

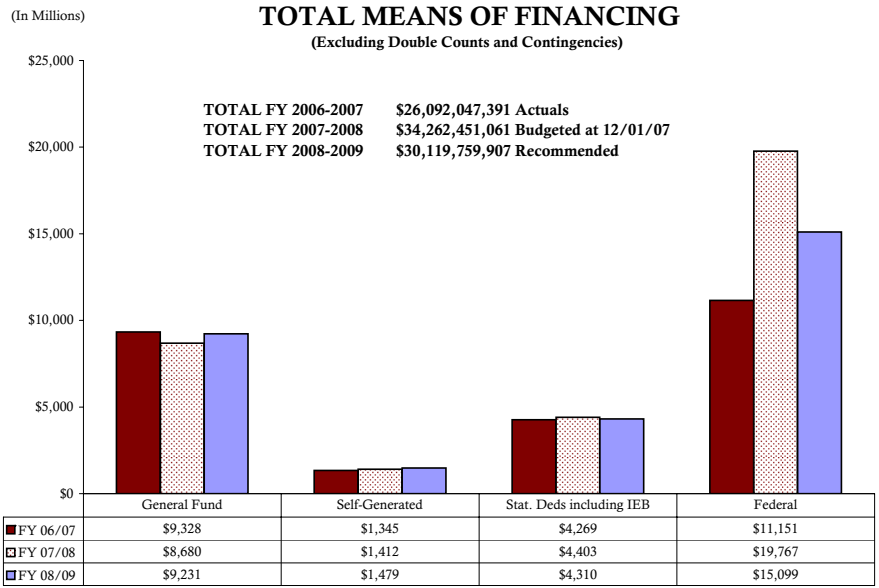
Human Resources includes: Health and Hospitals (and related Ancillary agencies); Social Services; Youth Services; Local Housing of State Juvenile Offenders; Louisiana State University Medical Center Health Care Services Division; Mental Health Advocacy Service; Patients' Compensation Fund Oversight Board (and related Ancillary agencies); Office of Women's Policy; Office of Elderly Affairs; and Veterans' Affairs.

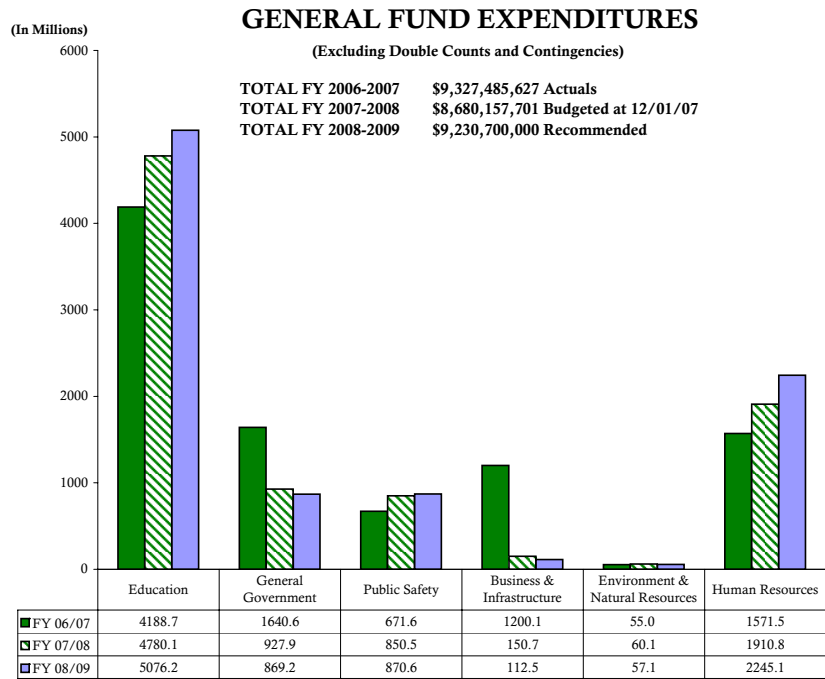
Public Safety includes: Corrections Services; Local Housing of State Adult Offenders; Corrections Debt Service; Prison Enterprises; Public Safety Services (and related Ancillary agencies); Governor's Office of Homeland Security and Emergency Preparedness; Military Affairs; Office of the Attorney General; District Attorneys & Assistant District Attorneys; Supplemental Pay to Law Enforcement Personnel; Louisiana Commission on Law Enforcement; Municipal Fire and Police Civil Service; State Police Commission; Two Percent Fire Insurance Fund; and Emergency Medical Services - Parishes & Municipalities.

Note: Some departments and agencies encompass programs and activities that could be assigned to more than one functional area. Therefore, some of the assignments above do not follow strict budget schedule groupings but instead reflect primary mission or purpose of a department or agency.

GENERAL FUND REVENUE



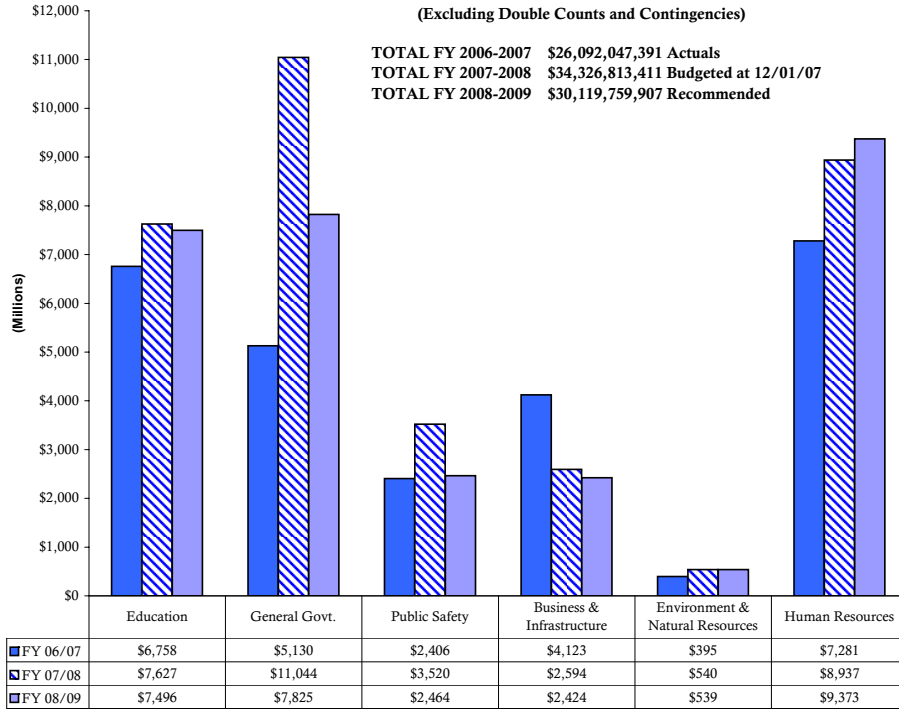




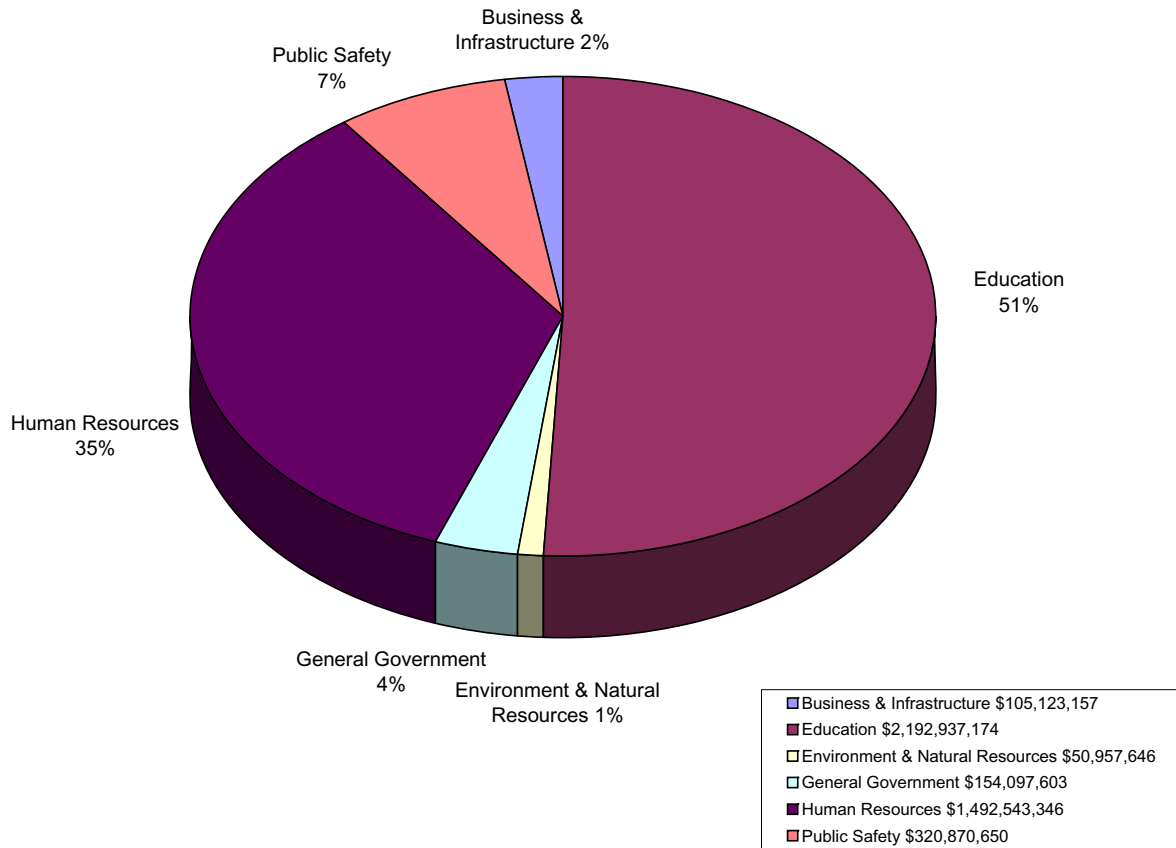
TOTAL EXPENDITURES

(Excluding Double Counts and Contingencies)

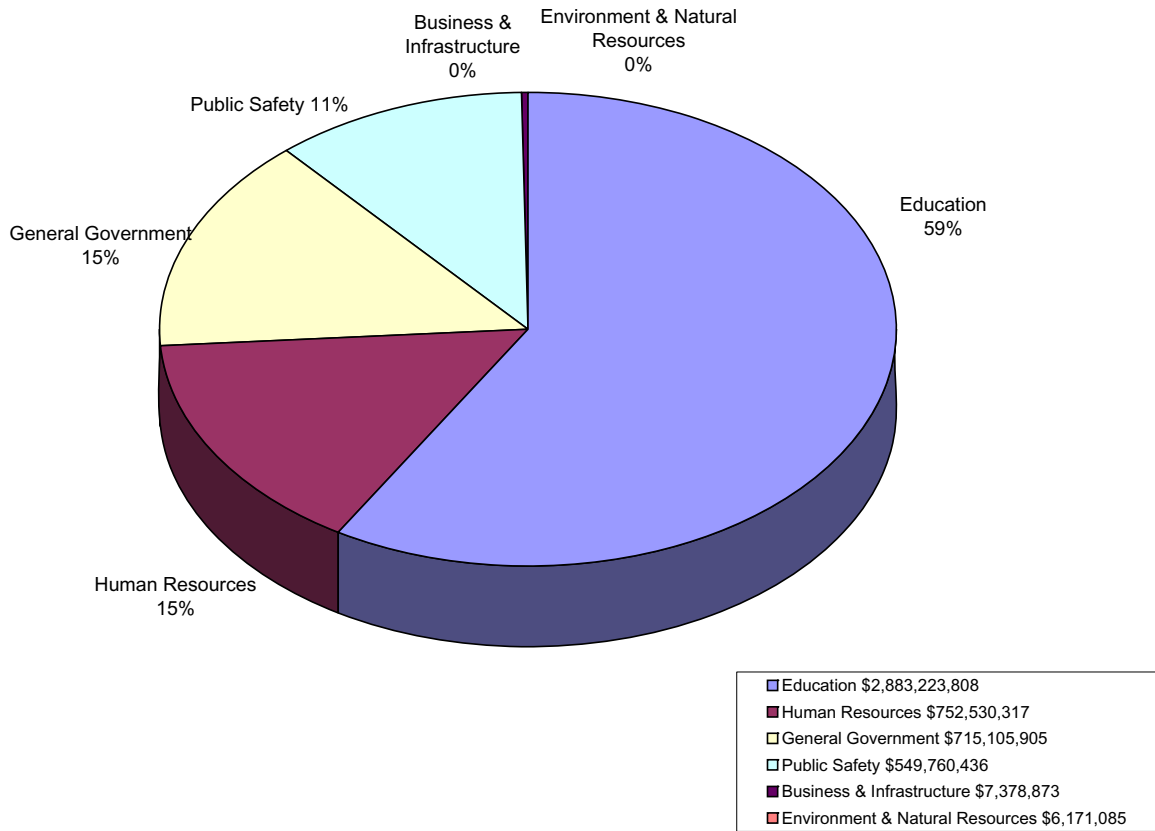
TOTAL FY 2006-2007 \$26,092,047,391 Actuals
 TOTAL FY 2007-2008 \$34,326,813,411 Budgeted at 12/01/07
 TOTAL FY 2008-2009 \$30,119,759,907 Recommended



Discretionary State General Fund Expenditures by Functional Area Enacted for FY 2008-2009
(Total \$4,316,529,576)



Non-Discretionary State General Fund Expenditures by Functional Area Enacted for FY 2008-2009
(Total \$4,914,170,424)



**NON-DISCRETIONARY GENERAL FUND
EXPENDITURES BY CATEGORY FOR FISCAL YEAR 2008-2009**

