

DECLARATION OF EMERGENCY

Department of Wildlife and Fisheries Wildlife and Fisheries Commission

Chronic Wasting Disease Control Areas (LAC 76:V.137)

In accordance with R.S. 49:962, the Wildlife and Fisheries Commission does hereby amend the Rules and Regulations for Chronic Wasting Disease Control Areas by adding the Control Area map within this section due to a recent CWD confirmed case found in a harvested white-tailed deer in Catahoula Parish. The effective date of this Declaration of Emergency will be May 1, 2025 and it shall remain in effect for 180 days or until adoption of the final Rule.

Title 76

WILDLIFE AND FISHERIES

Part V. Wild Quadrupeds and Wild Birds

Chapter 1. Wild Quadrupeds

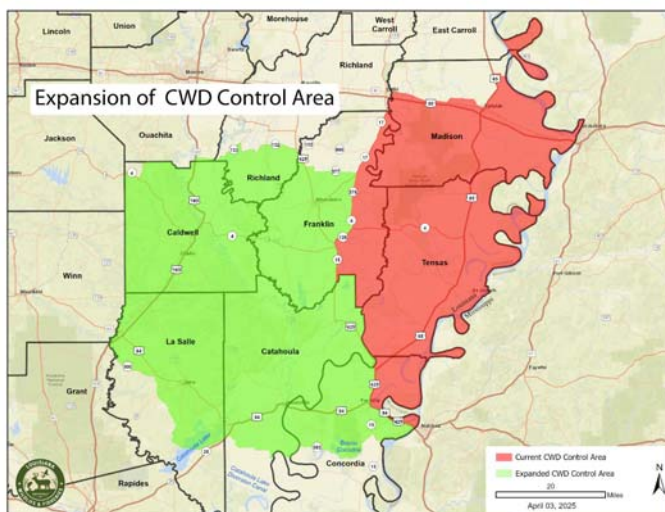
§137. Rules and Regulations for Chronic Wasting Disease Control Areas

A. Definitions

Cervid—any animal of the family *Cervidae* including, but not limited to, white-tailed deer, mule deer, elk, moose, caribou “reindeer”, fallow deer, axis deer, sika deer, and red deer.

Chronic Wasting Disease (CWD)—Neurodegenerative disease found in most deer species, including white-tailed deer, mule deer, elk, red deer, moose, and caribou. It is infectious, always fatal, and has no treatment. CWD is part of a group of diseases known as transmissible spongiform encephalopathies (TSEs) and is similar to BSE (mad cow disease) in cattle and scrapie in sheep. These diseases cause irreversible damage to brain tissue, which leads to excessive salivation, neurological symptoms, emaciation, and death of the animal.

Control Area—a designated area consisting of the CWD infectious zone and buffer zone where mitigation measures and regulations are applied to curb further spread of the disease. The control area is established and defined by the map below:



LDWF—the Louisiana Department of Wildlife and Fisheries.

B. Supplemental feeding, baiting, placement of bait, or hunting over bait is prohibited within a LDWF designated

CWD control area. It is the responsibility of hunters to check their hunting area for bait prior to each hunt. A baited area is an area on which salt, grain, or other feed has been placed, exposed, deposited, distributed, or scattered, if that salt, grain, or other feed could serve as a lure or attractant for wild quadrupeds or wild birds via ingestion. The use of bait not normally ingested by deer is allowed for feral hog trapping, or by holders of bear harvest permits during the designated bear baiting period.

C. The export of any cervid carcass or part of a cervid carcass originating within a LDWF designated CWD control area is prohibited, except for: meat that is cut and wrapped; meat that has been boned out; quarters or other portions of meat with no part of the spinal column or head attached, antlers, clean skull plates with antlers, cleaned skulls without tissue attached, capes, tanned hides, finished taxidermy mounts, and cleaned cervid teeth.

D. Approved parts transported out of the CWD control area must be legally possessed. Approved parts must contain a possession tag with the hunter’s name, address, LDWF license number, parish of harvest, date of harvest, and sex of deer. All cervid parts transported out of the control area that are in violation of the provisions of this ban shall be seized and disposed of in accordance with the Wildlife and Fisheries Commission and Department of Wildlife and Fisheries rules.

E. LDWF shall establish a permitting system to allow for uncleaned cervid heads to be transported out of the control area solely for taxidermy purposes.

AUTHORITY NOTE: Promulgated in accordance with the Louisiana Constitution, Article IX, Section 7, R.S. 56:1, R.S. 56:5, R.S. 56:6(10), (13) and (15), R.S. 56:20, R.S. 56:112, R.S. 56:116.1 and R.S. 56:171 et seq.

HISTORICAL NOTE: Promulgated by the Department of Wildlife and Fisheries, Wildlife and Fisheries Commission, LR 48:2190 (August 2022), amended LR 51:

Kevin Sagrera
Chairman

2504#012